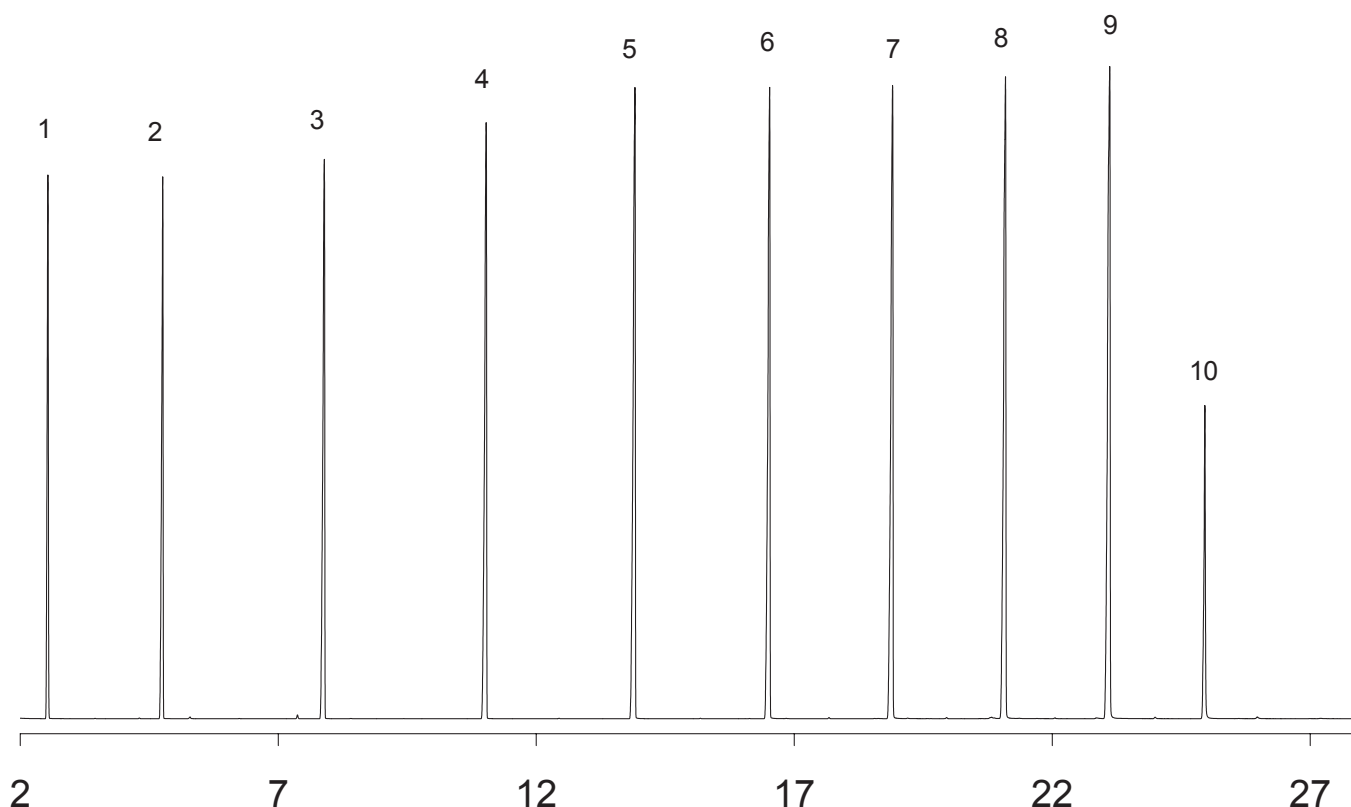


Even Carbon FAMES

Column: Zebtron ZB-5
Dimensions: 30m x 0.25mm x 0.25µm
Order No.: 7HG-G002-11
Injection: Split 20:1 @ 280°C, 0.2µL
Carrier Gas: Constant Flow Helium 1.1mL/min
Oven Program: 100°C for 2 min to 280 at 8°C/min for 5min.
Detector: MS @ 280°C
Sample:

1. Methyl Caproate
2. Methyl Caprylate
3. Methyl Caprate
4. Methyl Laurate
5. Methyl Myristate
6. Methyl Palmitate
7. Methyl Stearate
8. Methyl Arachidate
9. Methyl Behenate
10. Methyl Lignocerate

Notes: Analyte concentrations were 11.1mg/mL except for 10 which was at 3.47mg/mL.



www.phenomenex.com

Phenomenex products are available worldwide. For the distributor in your country, contact Phenomenex USA, International Department by telephone, fax or e-mail: international@phenomenex.com.

phenomenex®
...breaking with traditionSM

USA	Puerto Rico	Canada	United Kingdom	Germany	New Zealand	Australia
mail: 411 Madrid Ave. Torrance, CA 90501-1430 USA	271 Sierra Morena, Suite #104 San Juan, Puerto Rico 00926	411 Madrid Ave. Torrance, CA 90501-1430 USA	Queens Avenue, Hurdsfield Ind. Est., Macclesfield, Cheshire SK10 2BN, England	Zeppelinstr. 5 63741 Aschaffenburg Deutschland	P.O. Box 31-601 Milford Auckland New Zealand	P.O. Box 264 Pennant Hills NSW 1715 Australia
tel.: (310) 212-0555	(800) 541-HPLC	(800) 543-3681	01625-501367	06021-58830-0	09-4780951	1800-553-929
fax: (310) 328-7768	(310) 328-7768	(310) 328-7768	01625-501796	06021-58830-11	09-4780952	1800-553-923
email: info@phenomenex.com	info@phenomenex.com	info@phenomenex.com	ukinfo@phenomenex.com	anfrage@phenomenex.com	info@phenomenex.co.nz	info@phenomenex.com.au