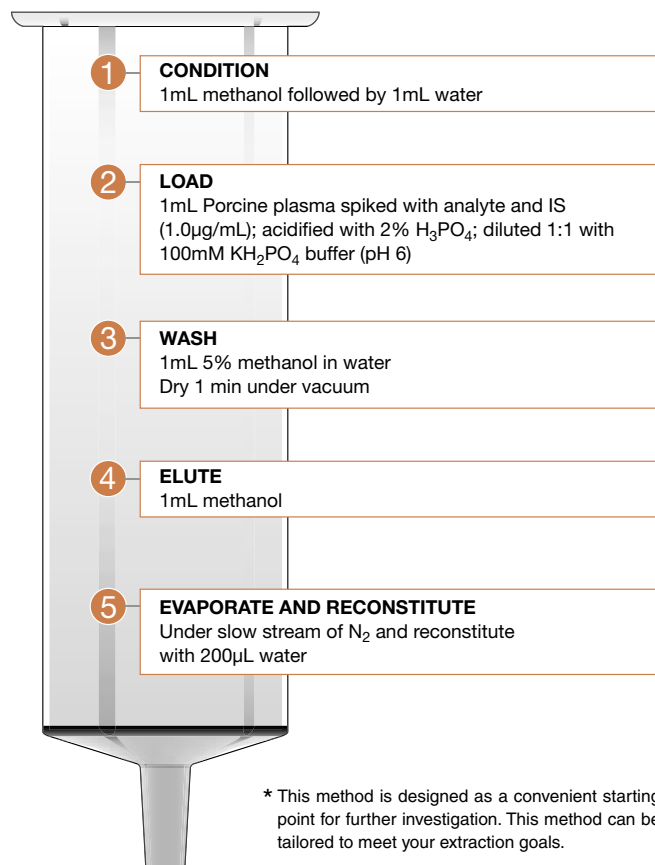
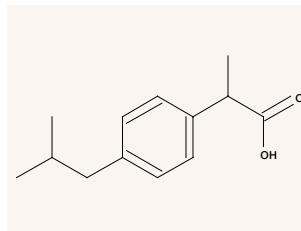


Ibuprofen Extracted from Plasma using strata™ X

Strata Method* strata-X 30mg/1mL

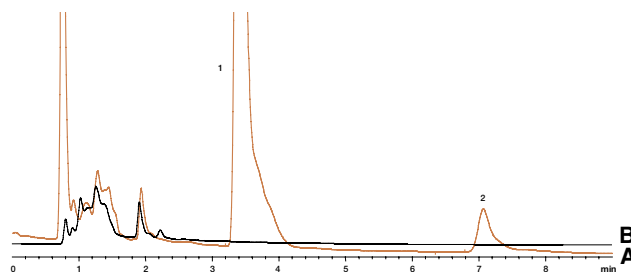


Ibuprofen



HPLC chromatograms of plasma extracts:

A) blank B) spiked sample



HPLC Analysis Conditions:

Column: Luna™ 5µ, C8(2), 150 x 4.6mm (Order No: 00F-4249-E0-TN)
Sample: 50µL of reconstituted Porcine plasma extract
Mobile Phase: A: 0.05% H₃PO₄ (pH 2.3); B: acetonitrile, A/B (50:50)
Flow rate: 1.5mL/min
Temperature: 25°C
Detector: UV @ 230nm
Peaks: 1. Naproxen (IS)
 2. Ibuprofen

Ordering Information

Order Number	Description
8B-S100-TAK-TN	strata-X 30mg/1mL Tubes (100/Box)
8B-S100-UBJ-TN	strata-X 60mg/3mL Tubes (50/Box)
8B-S100-FBJ-TN	strata-X 200mg/3mL Tubes (50/Box)
8B-S100-HBJ-TN	strata-X 500mg/3mL Tubes (50/Box)
8B-S100-ECH-TN	strata-X 100mg/6mL Tubes (30/Box)
8B-S100-FCH-TN	strata-X 200mg/6mL Tubes (30/Box)
8B-S100-HCH-TN	strata-X 500mg/6mL Tubes (30/Box)
8B-S100-HDG-TN	strata-X 500mg/12mL Giga Tubes (20/Box)
8B-S100-JEG-TN	strata-X 1g/20mL GigaTubes (20/Box)
8E-S100-NGB-TN	strata-X 96-Well Plate 5mg/well (2/Box)
8E-S100-AGB-TN	strata-X 96-Well Plate 10mg/well (2/Box)
8E-S100-TGB-TN	strata-X 96-Well Plate 30mg/well (2/Box)
8E-S100-UGB-TN	strata-X 96-Well Plate 60mg/well (2/Box)
00M-S033-B0-CB-TN	strata-X 25µm On-Line Extraction Cartridge (each)
CH0-5845-TN	20mm Cartridge Holder (each)

Results

Analyte	Concentration (µg/mL)	% Recovery	% RSD (n=3)
Ibuprofen	1.0	98	5.6

For a digital copy of this Technical Note, please visit www.Phenomenex.com/TechNotes/CN007



www.phenomenex.com

Phenomenex products are available worldwide. For the distributor in your country, contact Phenomenex USA, International Department by telephone, fax or e-mail: international@phenomenex.com.

USA
 tel.: (310) 212-0555
 fax: (310) 328-7768
 email: info@phenomenex.com

Puerto Rico
 (800) 541-HPLC
 (310) 328-7768
info@phenomenex.com

Canada
 (800) 543-3681
 (310) 328-7768
info@phenomenex.com

United Kingdom
 01625-501367
 01625-501796
ukinfo@phenomenex.com

Germany
 06021-58830-0
 06021-58830-11
anfrage@phenomenex.com

New Zealand
 09-4780951
 09-4780952
info@phenomenex.co.nz

Australia
 1800-553-929
 1800-553-923
info@phenomenex.com.au

phenomenex®
 ...breaking with tradition™