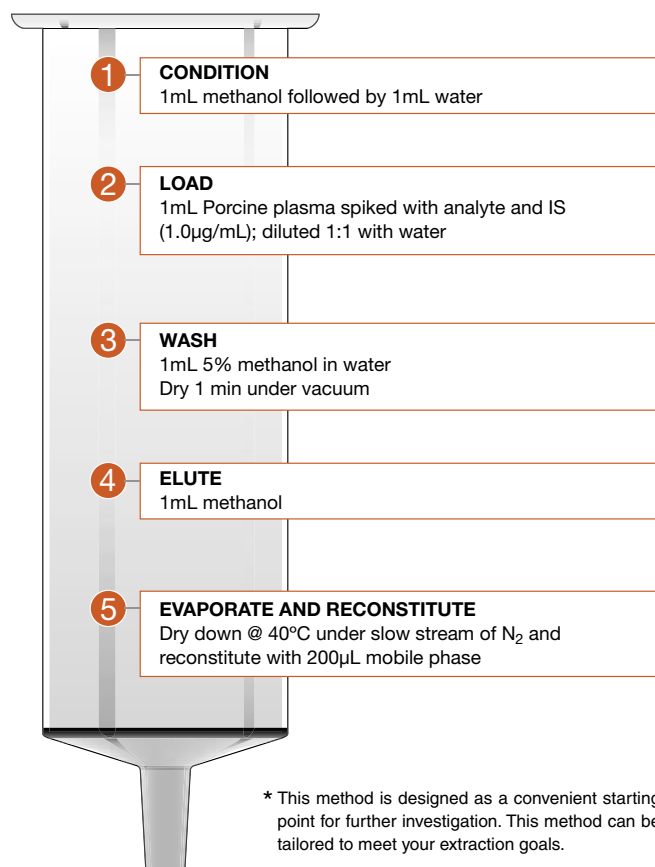


Diuretic Compounds Extracted from Serum using strata™ X

Strata Method* strata-X 30mg/1mL

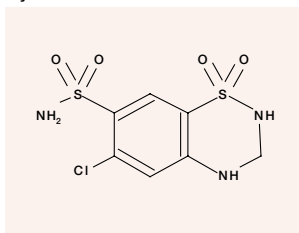


* This method is designed as a convenient starting point for further investigation. This method can be tailored to meet your extraction goals.

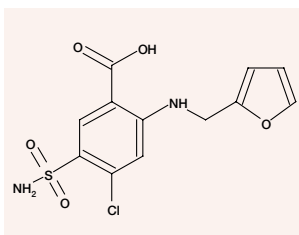
Ordering Information

Order Number	Description
8B-S100-TAK-TN	strata-X 30mg/1mL Tubes (100/Box)
8B-S100-UBJ-TN	strata-X 60mg/3mL Tubes (50/Box)
8B-S100-FBJ-TN	strata-X 200mg/3mL Tubes (50/Box)
8B-S100-HBJ-TN	strata-X 500mg/3mL Tubes (50/Box)
8B-S100-ECH-TN	strata-X 100mg/6mL Tubes (30/Box)
8B-S100-FCH-TN	strata-X 200mg/6mL Tubes (30/Box)
8B-S100-HCH-TN	strata-X 500mg/6mL Tubes (30/Box)
8B-S100-HDG-TN	strata-X 500mg/12mL Giga Tubes (20/Box)
8B-S100-JEG-TN	strata-X 1g/20mL Giga Tubes (20/Box)
8E-S100-NGB-TN	strata-X 96-Well Plate 5mg/well (2/Box)
8E-S100-AGB-TN	strata-X 96-Well Plate 10mg/well (2/Box)
8E-S100-TGB-TN	strata-X 96-Well Plate 30mg/well (2/Box)
8E-S100-UGB-TN	strata-X 96-Well Plate 60mg/well (2/Box)
00M-S033-B0-CB-TN	strata-X 25µm On-Line Extraction Cartridge (each)
CH0-5845-TN	20mm Cartridge Holder (each)

Hydrochlorothiazide

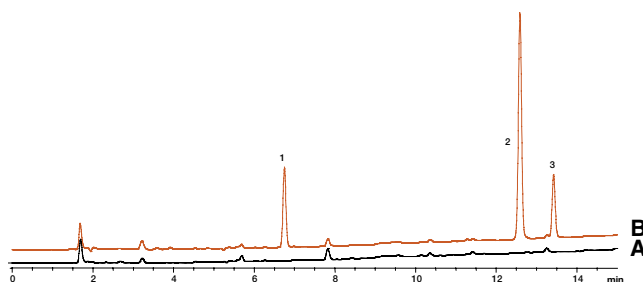


Furosemide



HPLC chromatogram of plasma extracts:

A) blank B) spiked sample



HPLC Analysis Conditions:

Column:	Synergi™ Max-RP, 4µ, 150 x 4.6mm (Order No: 00F-4337-E0-TN)
Sample:	50µL of reconstituted extract
Mobile Phase:	A: 20mM KH ₂ PO ₄ (pH 2.5); B: methanol
Gradient:	A/B (95:5) to A/B (20:80) in 15 min
Flow rate:	1.0mL/min
Temperature:	25°C
Detector:	UV @ 254nm
Peaks:	1. Hydrochlorothiazide 2. Sulfaquinolaxaline (IS) 3. Furosemide

Results

Analyte	Concentration (µg/mL)	% Recovery	% RSD (n=4)
Furosemide	1.0	97	3.19
Hydrochlorothiazide	1.0	93	1.78

For a digital copy of this Technical Note, please visit www.Phenomenex.com/TechNotes/CN009



www.phenomenex.com

Phenomenex products are available worldwide. For the distributor in your country, contact Phenomenex USA, International Department by telephone, fax or e-mail: international@phenomenex.com.