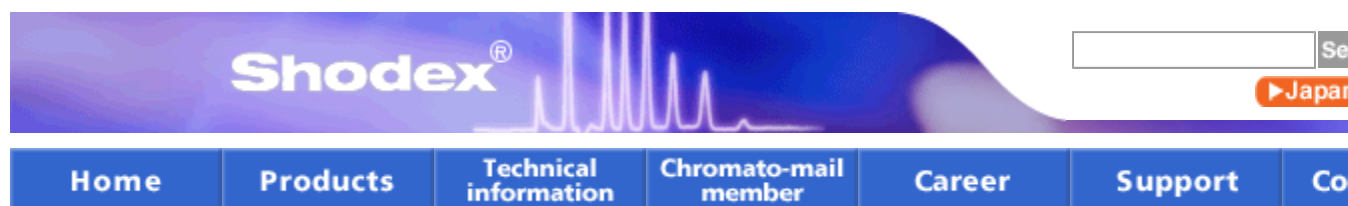
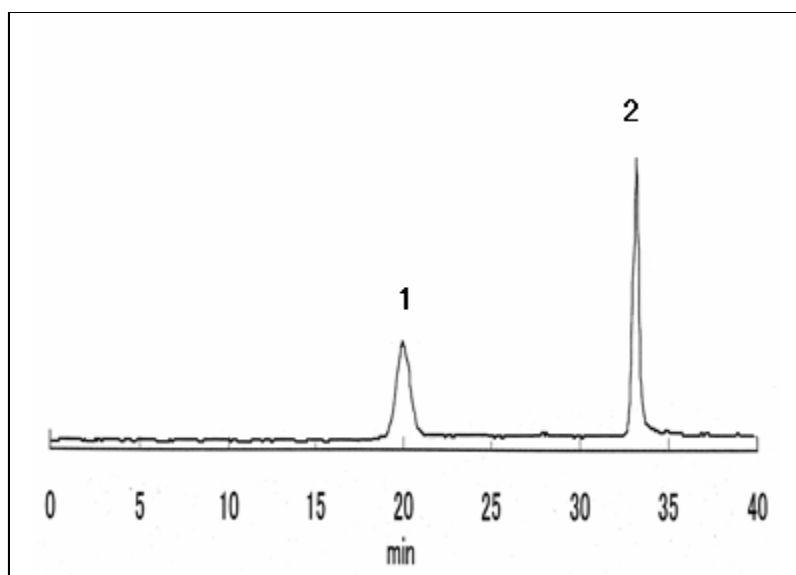


Shodex: Packed Columns for HPL



Glyphosate and Glufosinate

Glyphosate and glufosinate which are phosphorus-containing amino acid type herbicides were analyzed with IC/ICP-MS using (a column for anion chromatography).



Sample : 20micro-L

1. [Glufosinate](#)

2. [Glyphosate](#)

Column : Shodex IC SI-90 4E (4.0mmID*250mm)

Eluent : (A) 0.3mM NaOH aq.

(B) 0.3mM NaOH + 20mM Na₂CO₃ aq.

Gradient:

0 to 20min, A/B=95/5

20 to 30min, A/B=95/5 to 50/50

30 to 40min, A/B=50/50

Flow rate : 1.0mL/min

Suppressor : Dionex AMMS-ICS II

Detector : ICP/MS, P at m/z=31

Column temp. : Room temp.

[Precautions for use](#) | [Sitemap](#) | [Privacy policy](#)

[Home](#) | [Products](#) | [Technical information](#) | [Chromato-mail member](#) | [Support](#) | [Contact us](#) | [Search](#)

All rights reserved, copyright(c)SHOWA DENKO K.K.