

EPA Method 8330 Explosives mix using Synergi Polar-RP

Column: Synergi 4u Polar-RP 80A

Dimensions: 250 x 4.6 mm ID

Order No: 00G-4336-E0

Elution Type: Isocratic

Eluent A: Water

Pct. A: 60

Eluent B: MeOH

Pct. B: 5

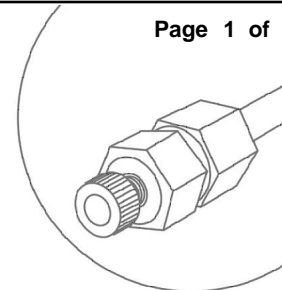
Eluent C: ACN

Pct. C: 35

Flow Rate: 1 mL/min

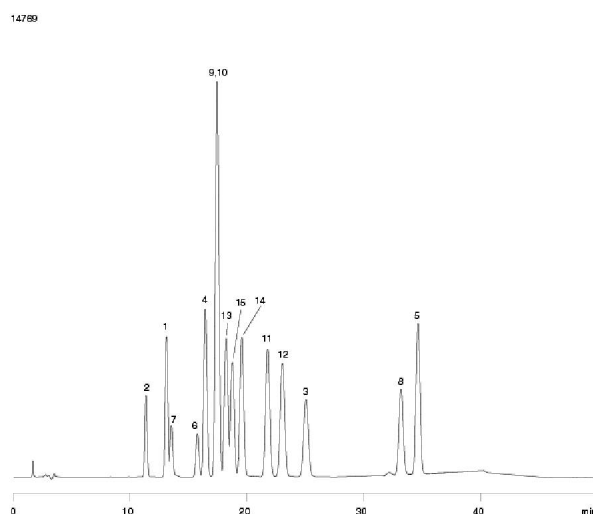
Col. Temp.: 35 °C

Detection: UV-Vis Abs. - Variable Wave. @ 254 nm (ambient)



Products used in this Application:

synergi™



ANALYTES:

- 1 HMX
- 2 RDX
- 3 1,3,5-Trinitrobenzene
- 4 1,2-Dinitrobenzene
- 5 Tetryl
- 6 1,3-Dinitrobenzene
- 7 Nitrobenzene
- 8 2,4,6-Trinitrotoluene
- 9 4-Amino-dinitrotoluene
- 10 2-Amino-dinitrotoluene
- 11 2,6-Dinitrotoluene
- 12 2,4-Dinitrotoluene
- 13 2-Nitrotoluene
- 14 4-Nitrotoluene
- 15 3-Nitrotoluene