

## Excellent polar compound retention

**Column:** Synergi 4u Polar-RP 80A

**Dimensions:** 150 x 4.6 mm ID

**Order No:** 00F-4336-E0

**Elution Type:** Isocratic

**Eluent A:** 20mM Potassium phosphate pH 3

**Pct. A:** 50

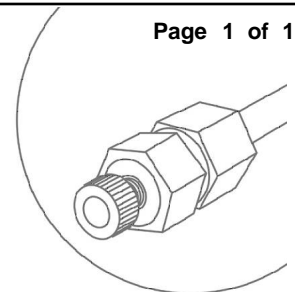
**Eluent B:** Methanol

**Pct. B:** 50

**Flow Rate:** 1 mL/min

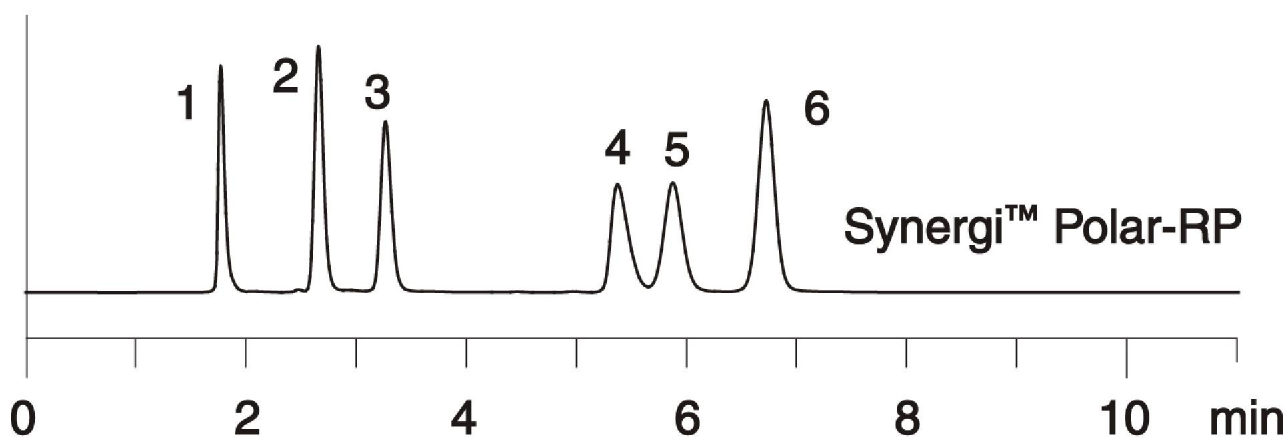
**Col. Temp.:** ambient

**Detection:** UV-Vis Abs. - Variable Wave. @ 230 nm (ambient)



Products used in this Application:

**synergi**<sup>™</sup>



### ANALYTES:

- 1 Metaproterenol
- 2 Pindolol
- 3 Metoprolol
- 4 Alprenolol
- 5 Propranolol
- 6 Ethyl paraben