

## Basic Drugs at pH 10

**Column:** Synergi 4 $\mu$  Max-RP 80Å

**Dimensions:** 150 x 4.6 mm ID

**Order No:** 00F-4337-E0

**Elution Type:** Isocratic

**Eluent A:** 20 mM Triethylamine pH 10.0

**Eluent B:** Methanol

**Eluent C:** Acetonitrile

**Flow Rate:** 1 mL/min

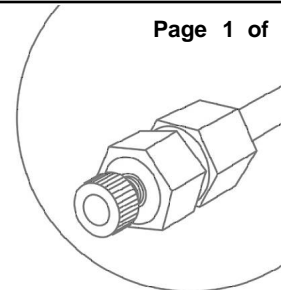
**Col. Temp.:** 25 °C

**Detection:** UV-Vis Abs. - Variable Wave. @ 254 nm (ambient)

**Pct. A:** 30

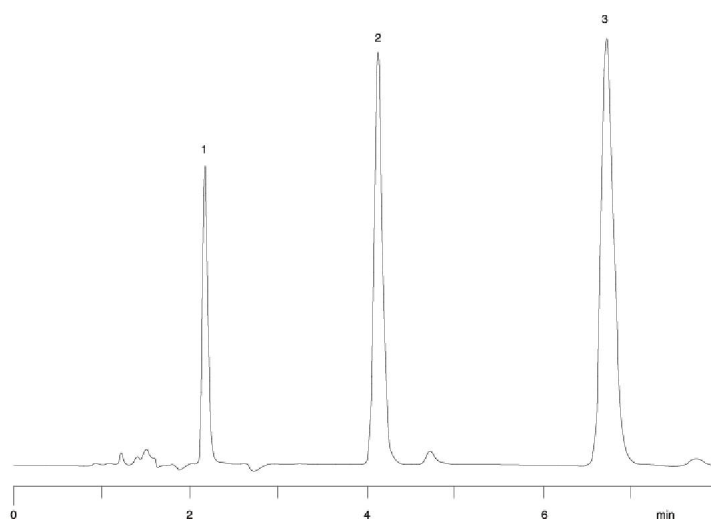
**Pct. B:** 35

**Pct. C:** 35



Products used in this Application:

**synergi<sup>™</sup>**



### ANALYTES:

- 1 Scopolamine
- 2 Doxylamine
- 3 Diphenhydramine