

## Analgesics as a Probe for Phenyl Selectivity

**Column:** Synergi 4u Polar-RP 80A

**Dimensions:** 150 x 4.6 mm ID

**Order No:** 00F-4336-E0

**Elution Type:** Isocratic

**Eluent A:** 20 mM Ammonium formate pH 3.5

**Pct. A:** 50

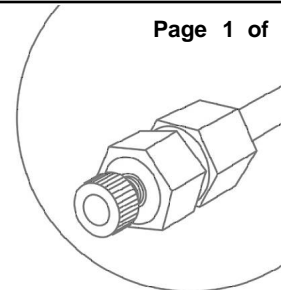
**Eluent B:** Acetonitrile

**Pct. B:** 50

**Flow Rate:** 2 mL/min

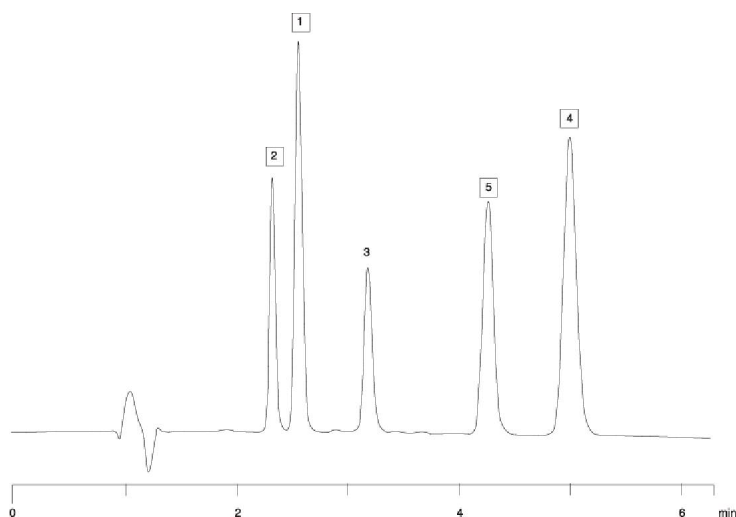
**Col. Temp.:** 25 °C

**Detection:** UV-Vis Abs. - Variable Wave. @ 230 nm (ambient)



Products used in this Application:

 **synergi™**



### ANALYTES:

- 1 Indoprofen
- 2 Ethylparaben
- 3 Naproxen
- 4 Indomethacin
- 5 Ibuprofen