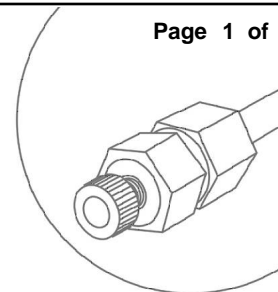


Polar Bases on Luna 5µm HILIC

Page 1 of 1

Column: Luna 5u HILIC 200A
Dimensions: 150 x 4.6 mm ID
Order No: 00F-4450-E0
Elution Type: Isocratic
Eluent A: Acetonitrile **Pct. A:** 90
Eluent B: 100mM Ammonium Formate, pH 3.2 **Pct. B:** 10
Flow Rate: 1 mL/min
Col. Temp.: ambient
Detection: UV-Vis Abs. - Variable Wave. @ 260 nm (ambient)
Comment: competitor comparison

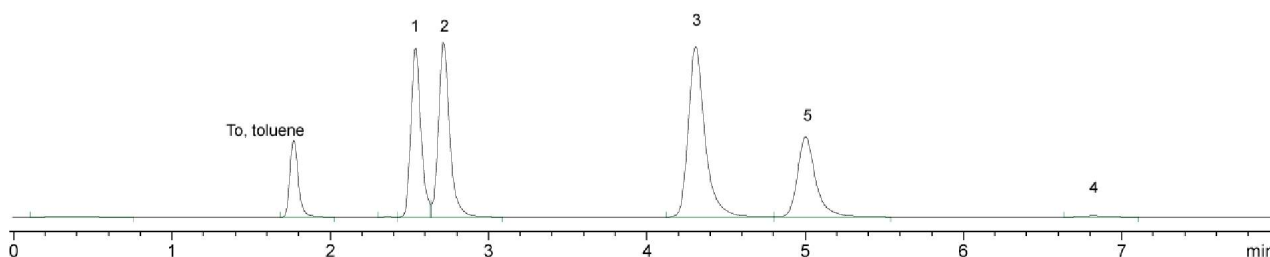


Products used in this Application:

LUNA®

Analyst Note: The pH of the aqueous buffer is specified. The pH in mixed organic was not measured.

16388



ANALYTES:

- 1 Toluene
- 2 Thymine (MRM: 245.2/113.2)
- 3 Uracil
- 4 Adenine
- 5 Guanine
- 6 Cytosine