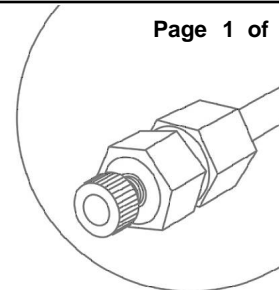


## Water Soluble Vitamins (Synergi 4µm Fusion-RP)

**Column:** Synergi 4u Fusion-RP 80A  
**Dimensions:** 150 x 4.6 mm ID  
**Order No:** 00F-4424-E0  
**Elution Type:** Gradient  
**Eluent A:** 20mM Potassium phosphate, pH 3  
**Eluent B:** Acetonitrile

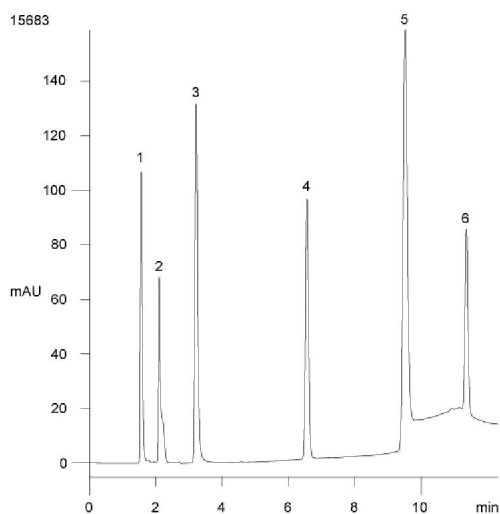
Gradient Profile:	Step No.	Time (min)	Pct A	Pct B
	1	0	95	5
	2	15	75	25

**Flow Rate:** 1 mL/min  
**Col. Temp.:** ambient  
**Detection:** UV-Vis Abs. - Variable Wave. @ 214 nm (ambient)



Products used in this Application:

**synergi**™



### ANALYTES:

- 1 Thiamine
- 2 Ascorbic acid
- 3 Niacinamide
- 4 Pantothenic acid
- 5 p-Aminobenzoic acid
- 6 Vitamin B12