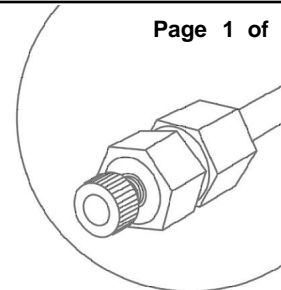
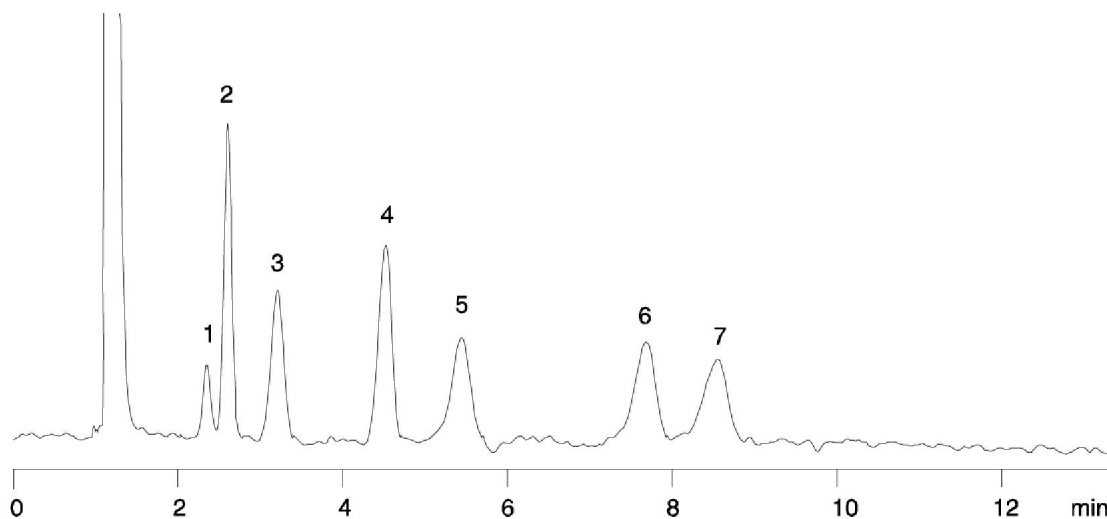


Simple Sugars (#3) on Luna Amino

Column: Luna 5u NH2 100A**Dimensions:** 250 x 4.6 mm ID**Order No:** 00G-4378-E0**Elution Type:** Isocratic**Eluent A:** Acetonitrile**Eluent B:** Water**Flow Rate:** 3 mL/min**Col. Temp.:** 40 °C**Detection:** Refractive Index (RI) (ambient)**Pct. A:** 80**Pct. B:** 20**Products used in this Application:****LUNA[®]****ANALYTES:**

- 1 Xylose
- 2 Fructose
- 3 Glucose
- 4 Sucrose
- 5 Maltose
- 6 Melizitose
- 7 Raffinose