

## Alcohols

Column: Rezex<sup>™</sup> RHM-Monosaccharide H+ (8%), LC Column 300 x 7.8 mm, Ea

Dimensions: 300 x 7.8 mm ID

Order No: 00H-0132-K0

Elution Type: Isocratic

Eluent A: Water

Gradient	Step No.	Time (min)	Pct A
Profile:	1	0	100

Flow Rate: 0.6 mL/min

Col. Temp.: 60 °C

Detection: Refractive Index (RI) @ nm (ambient)

Analyst Note: SecurityGuard<sup>™</sup> Guard Cartridge System extends column lifetime.

- SecurityGuard Cartridges, Carbo-H 4 x 3.0mm, 10/Pk Part No.: AJ0-4490

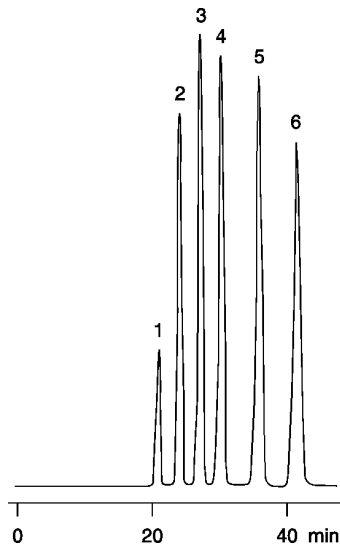
- Holder Part No.: KJ0-4282

**REZEX**<sup>™</sup>  
HPLC COLUMNS for Carbohydrates, Oligosaccharides, and Organic Acid Analysis



Products used in this application:

**REZEX**<sup>™</sup>



### ANALYTES:

- 1 Methanol
- 2 Ethanol
- 3 Isopropanol
- 4 n-Propanol
- 5 sec-Butanol
- 6 n-Butanol

